

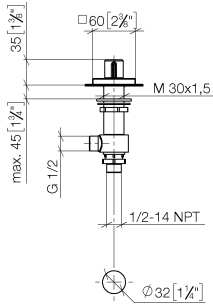
20 000 986

- hole diameter valve 32 mm
- rosette 60 x 60 mm
- with cold marking

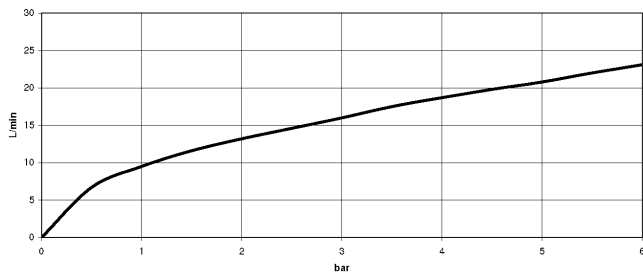


20 000 986

mm [inches]



**Flow rate chart**



**Codes & Standards**

ADA

ASME  
A112.18.1/CSA  
B125.1

NSF/ANSI 372

NSF/ANSI/CAN  
61



SYMETRICS Deck valve clockwise closing cold - Brushed Platinum

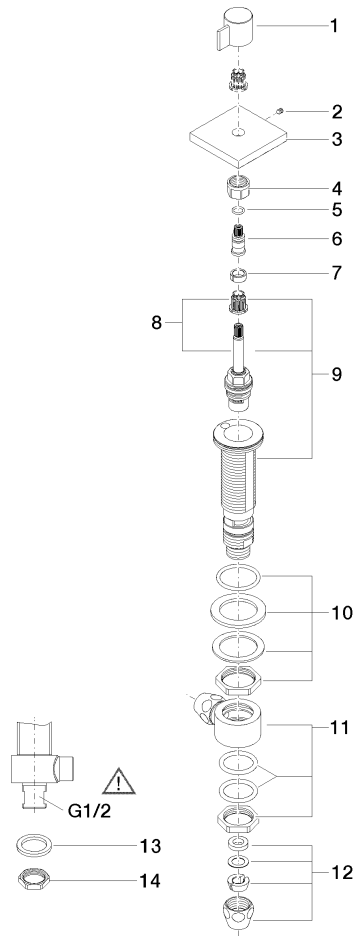
IMO

20 000 986

Certificates

IAPMO\_4976 (5).    ETA\_18519.    IAPMO\_6397.

20 000 986



**Spare parts list**

No.	Item Number	Name	Quantity used	Delivery time
1	09 20 98 002-06	handle	1	10
2	90 31 11 007 00 90	pin	1	2
3	09 27 98 001-06	rosette	1	10
4	90 23 30 023 00 90	nut	1	2
5	90 14 10 060 00 90	seal	1	2
6	09 29 06 020-06	spindle	1	-
Spare part can no longer be ordered, please order the replacement item				
7	90 14 15 020 03 90	ring	1	2
8	90 90 03 137 00 90	top	1	2
9	04 17 11 045 37 90	side panel	1	2
10	04 23 10 032 78 90	fixing set	1	2
11	04 17 11 023 10 90	distributor	1	2
12	90 23 30 040 00-06	threaded connector	2	10
13	09 30 11 059 90	disc	1	2
14	09 23 10 012 90	nut	1	2